

## Communications Module (modem)

### Features

- View devices near calibration limits
- Plan maintenance visits
- Retrieve event log
- Dial in and observe reported faults
- Assist commissioning from remote location
- Offer value added service to customers
- Check software version to see if updates are available
- Retrieve configuration
- Avoid unnecessary call outs
- Simple to install
- Dongle protected access, for customers security

### Product Overview

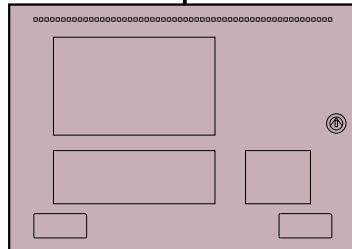
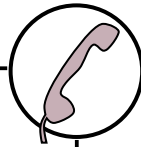
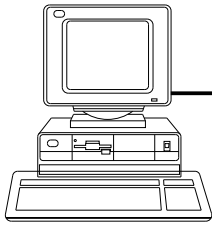
- The K556 communications module enables service companies to interrogate control panels remotely via a telephone link.
- The communications module is simple to install and requires a PSTN telephone line.
- The module mounts on existing pillars in the control panel and is supplied with all wiring and connections to enable speedy installation and commissioning.
- Once connected to the control panel via the Loop Explorer software, users can upload configuration data and event logs or take control of the system via the virtual panel interface. This allows the panel controls to be operated as if the user was standing at the panel.
- The Loop Explorer configuration programme (version 3.0 or higher) is used to dial into control panels but the dial up facility will not be available unless the PC calling the control panel is fitted with a registered dongle (part number B2158 for parallel port or B2158USB for USB version).



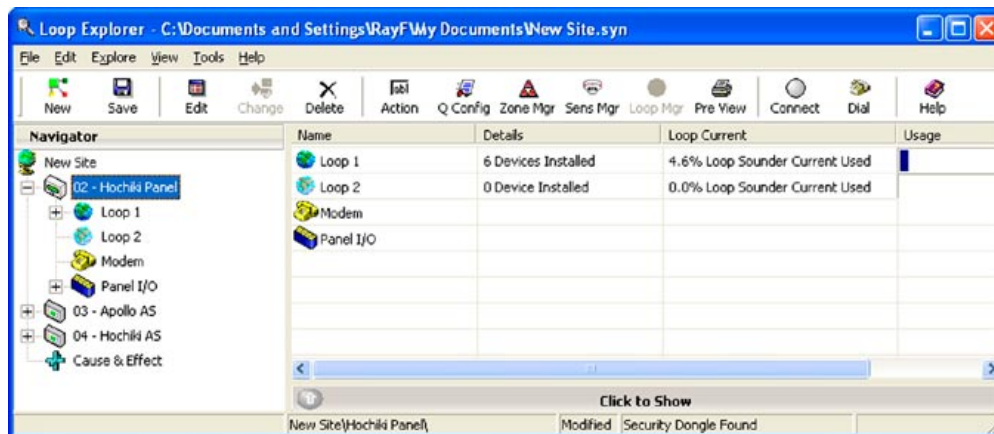
PC running Loop Explorer Programme & fitted with Dongle

Public Telephone Network

# Specifications



Syncro Control Panel fitted with Communications Module



**Note:** The Communications Module is compatible with Loop Explorer Software version 3 or above and Syncro Control Panel Firmware version 3 or above.

## Technical

- Module part number** - K556P (PSTN)
- Size** - 190mm x 62mm x 40mm
- Supply voltage** - 21V to 30V DC
- Current consumption** - 50 milliamps
- Connection** - PSTN
- Dongle part number** - B2158 (parallel port)  
B2158USB (USB serial port)

**Note:** One dongle required per user, to enable the 'dial in' facility within the Loop Explorer program

The manufacturer reserves the right to amend specifications without prior notice