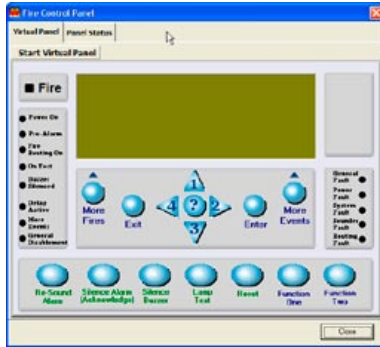


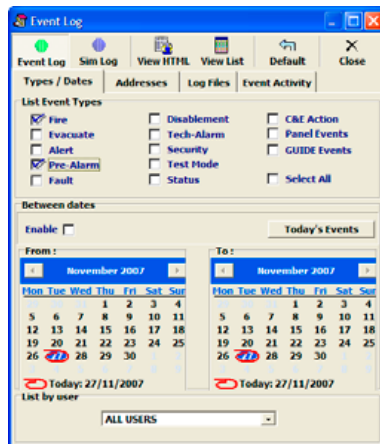
## Graphical User Interface for fire Detection Equipment

## Product Overview

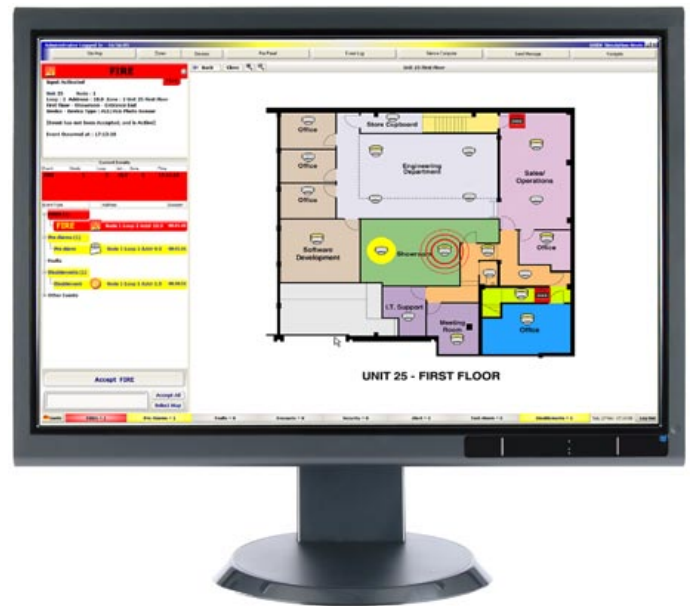
- Syncro fire control panels can send data to, and be controlled by, the Guide system providing a single point of co-ordination for all alarms.
- The powerful 32 bit programme features a standard Windows look and feel and runs under Windows® 2000 or XP.
- The system is highly configurable in terms of the style of presentation so that the end user can be presented with maps, text, photographs, audio or a combination of all as required.
- User profiles allow the system manager to control the facilities available to each individual system user.
- A comprehensive history logging and reporting system allows analysis of events and trends to be identified to reduce unwanted alarms.
- Easy to programme and simple to use, Guide provides a cost effective solution for fire alarm management at many levels.



Virtual Panel - allows direct control



Powerful Event log filtering



## Features

- Choice of text, graphic, event list display when an event occurs
- Versatile event analysis
- Total history archive
- Easy to programme
- Secure system
- Cost effective compared to other systems
- Simple to use
- Unlimited map linking & zoom facility
- Support for 100's of graphics
- Display and control for multiple panels
- Event history explore and export facility to text or HTML documents

# Range

## Product Code Description

<b>G1001</b>	GUIDE software - Single panel package
<b>G1004</b>	GUIDE software - 4 panel package
<b>G1008</b>	GUIDE software - 8 panel package
<b>G1016</b>	GUIDE software - 16 panel package
<b>G1032</b>	GUIDE software - 32 panel package
<b>G1064</b>	GUIDE software - 64 panel package

**Note:** Guide For use with Syncro Panels. Syncro 6 & 8 loop panels are considered 2 panels in the packages above.

## Technical

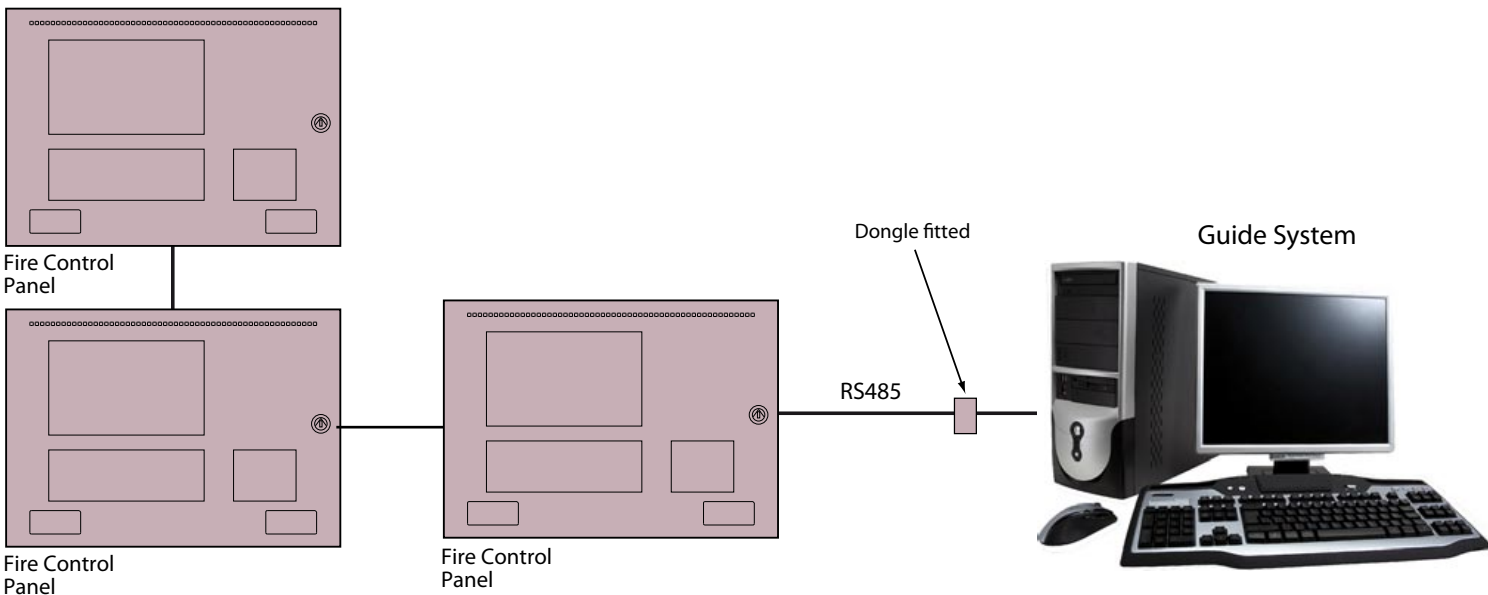
	Recommended Minimum	Notes
<b>Processor</b>	Intel Pentium 1Ghz	The faster the better, 2Ghz will provide future proofing.
<b>Operating system</b>	Windows® XP/Vista	Will operate under Windows® 2000
<b>Memory</b>	256MB minimum	The larger the better.
<b>Hard disk</b>	10GB minimum	>20GB would be better.
<b>Graphics</b>	1024 x 768 16M colours	The driver must allow this mode with large fonts. Separate Graphics card
<b>Sound card</b>	Any PC sound card	with 256MB graphics memory recommended
<b>Loudspeaker</b>	Any PC speakers	More convenient if built into PC.
<b>Monitor</b>	Any that supports above graphics driver	17 inch minimum recommended, the larger the better. (1024 x 768)
<b>Pointing device</b>	Mouse essential	Touch screen option supported Third button and wheels are supported.
<b>Printer</b>	Optional	Any type.
<b>Parallel port</b>	Optional	Required if parallel printer to be used.
<b>Serial ports</b>	One RS232 per network	Isolated converter supplied for connection to fire alarm system.
<b>CDROM drive</b>	Any	Required for installation of software and updates.
<b>Backup drive</b>	CD Writer	To back up history.

**Note:** Guide will be operating 24 hours a day for many years.

It may be desirable to include on site PC maintenance as part of the package.

Note: The Syncro panel to which the Guide system is connected must not have a printer fitted.

# Specifications



The manufacturer reserves the right to amend specifications without prior notice

125222, ., ., ., .14, .3  
/ : +7 (495) 794-75-04, +7 (499) 504-81-02

www.fastgroup.ru  
E-mail: fast@fastgroup.ru

